



**REGIONAL SPECIALISED METEOROLOGICAL CENTRE-TROPICAL CYCLONES, NEW DELHI**  
**TROPICAL CYCLONE ADVISORY BULLETIN NO. 24**

**FROM: RSMC –TROPICAL CYCLONES, NEW DELHI**

**TO: STORM WARNING CENTRE, NAYPYI TAW (MYANMAR)**  
**STORM WARNING CENTRE, BANGKOK (THAILAND)**  
**STORM WARNING CENTRE, COLOMBO (SRILANKA)**  
**STORM WARNING CENTRE, DHAKA (BANGLADESH)**  
**STORM WARNING CENTRE, KARACHI (PAKISTAN)**  
**METEOROLOGICAL OFFICE, MALE (MALDIVES)**  
**OMAN METEOROLOGICAL DEPARTMENT, MUSCAT (THROUGH RTH JEDDAH)**  
**YEMEN METEOROLOGICAL SERVICES, REPUBLIC OF YEMEN (THROUGH RTH JEDDAH)**  
**NATIONAL CENTRE FOR METEOROLOGY, UAE (THROUGH RTH JEDDAH)**  
**PRESIDENCY OF METEOROLOGY AND ENVIRONMENT, SAUDI ARABIA (THROUGH RTH JEDDAH)**  
**IRAN METEOROLOGICAL ORGANISATION, (THROUGH RTH JEDDAH)**  
**QATAR METEOROLOGICAL DEPARTMENT (THROUGH RTH JEDDAH)**

**TROPICAL CYCLONE ADVISORY NO. 24 FOR NORTH INDIAN OCEAN (THE BAY OF BENGAL AND ARABIAN SEA) VALID FOR NEXT 120 HOURS ISSUED AT 1710 UTC OF 17.05.2021 BASED ON 1500 UTC OF 17.05.2021.**

**SUB: EXTREMELY SEVERE CYCLONIC STORM “TAUKTAE” (PRONOUNCED AS TAU’TE) OVER EASTCENTRAL ARABIAN SEA**

THE **EXTREMELY SEVERE CYCLONIC STORM “TAUKTAE” (PRONOUNCED AS TAU’TE)** OVER NORTHEAST & ADJOINING EASTCENTRAL ARABIAN SEA CONTINUED TO MOVE NORTH-NORTHWESTWARDS WITH A SPEED OF ABOUT 17 KMPH DURING PAST 06 HOURS AND LAY CENTRED AT 1500UTC OF TODAY, THE 17<sup>TH</sup> MAY, 2021 OVER NORTHEAST ARABIAN SEA NEAR LATITUDE 20.5°N AND LONGITUDE 71.2°E, ABOUT 35 KM EAST-SOUTHEAST OF DIU (42914).

THE **EXTREMELY SEVERE CYCLONIC STORM “TAUKTAE” (PRONOUNCED AS TAU’TE)** IT IS VERY LIKELY TO MOVE NORTH-NORTHWESTWARDS AND CROSS GUJARAT COAST CLOSE TO EAST OF DIU (42914) DURING NEXT 3 HOURS. LANDFALL PROCESS CONTINUES AND WILL BE COMPLETED DURING NEXT 3 HOURS. FORWARD SECTOR OF THE EYE IS ENTERING INTO LAND.

Forecast track and intensity are given in the following table:

<b>DATE/TIME(UTC)</b>	<b>POSITION (LAT. °N/ LONG. °E)</b>	<b>MAXIMUM SUSTAINED SURFACE WIND SPEED (KMPH)</b>	<b>CATEGORY OF CYCLONIC DISTURBANCE</b>
17.05.21/1500	20.5/71.2	160-170 GUSTING TO 190	EXTREMELY SEVERE CYCLONIC STORM
17.05.21/1800	20.8/71.1	150-160 GUSTING TO 175	VERY SEVERE CYCLONIC STORM
18.05.21/0000	21.6/71.1	110-120 GUSTING TO 130	SEVERE CYCLONIC STORM
18.05.21/0600	22.5/71.4	70-80 GUSTING TO 90	CYCLONIC STORM
18.05.21/1200	23.4/71.8	50-60 GUSTING TO 70	DEEP DEPRESSION
19.05.21/0000	25.1/72.6	35-45 GUSTING TO 55	DEPRESSION

**PROBABILITY OF CYCLOGENESIS (FORMATION OF DEPRESSION)**

**NIL: 0%, LOW: 1-25%, FAIR: 26-50%, MODERATE: 51-75% AND HIGH: 76-100%**

**REMARKS:**

AS PER INSAT-3D SATELLITE IMAGERY BASED ON 1500 UTC OF TODAY THE 17<sup>th</sup> MAY 2021, THE INTENSITY OF THE SYSTEM IS **CATEGORISED AS T 5.0 AND CI 5.5 WITH EYE PATTERN. HOWEVER, EYE CONTINUED TO REMAIN RAGGED.** EYE TEMPERATURE MINUS 09.0 DEG C. BROKEN LOW AND MEDIUM CLOUDS WITH EMBEDDED INTENSE TO VERY INTENSE CONVECTION LAY OVER EASTCENTRAL & ADJOINING NORTHEAST ARABIAN SEA (AS) BETWEEN LATITUDE 16.0°N & 22.5°N AND EAST OF LONG 68.0E AND ALSO OVER GULF OF CAMBAY, GUJARAT, KONKAN GOA AND NORTH MADHYA MAHARASHTRA. MINIMUM CLOUD TOP TEMPERATURE IS -93°C.

THE ASSOCIATED MAXIMUM SUSTAINED WIND SPEED IS 90 KNOTS GUSTING TO 100KNOTS. THE ESTIMATED CENTRAL PRESSURE IS 960HPA. SEA CONDITION IS PHENOMENAL.

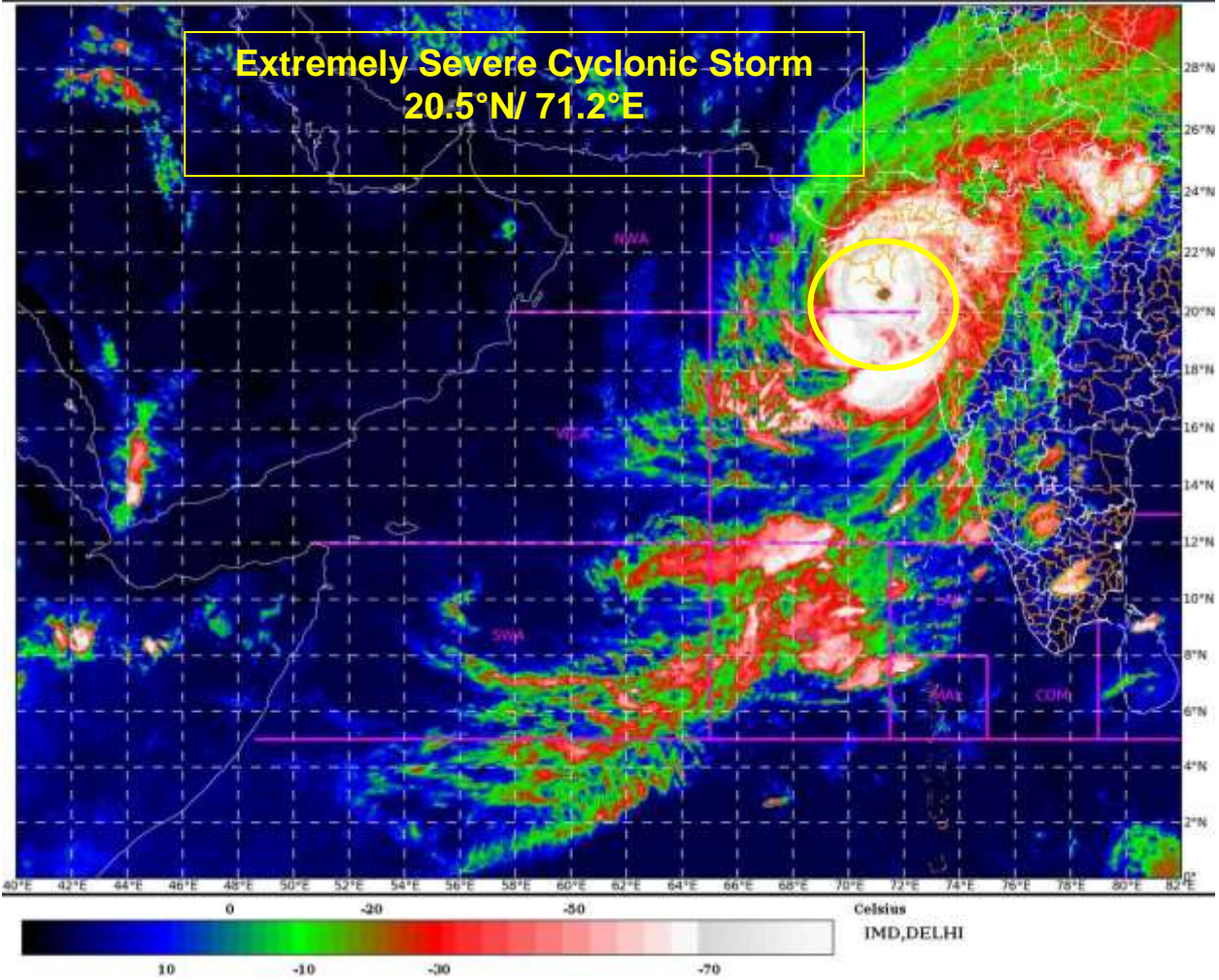
THE LOW LEVEL CYCLONIC VORTICITY HAS REDUCED AND IS ABOUT  $200-250 \times 10^{-6} \text{ S}^{-1}$  AROUND SYSTEM CENTRE. LOW LEVEL CONVERGENCE IS  $(40 \times 10^{-5} \text{ S}^{-1})$  TO THE SOUTHEAST OF SYSTEM CENTRE. POSITIVE UPPER LEVEL DIVERGENCE IS  $(30 \times 10^{-5} \text{ S}^{-1})$  AND LIES TO THE SOUTH OF THE SYSTEM CENTRE.. UPPER TROPOSPHERIC RIDGE RUNS ALONG 21°N. THE SYSTEM IS MAKING THE LANDFALL AND THE LANDFALL PROCESS WILL CONTINUE TILL 1800 UTC OF 17 May 2021. SYSTEM LIKLEY TO MOVE NORTH-NORTHWEST WARDS FOR SOMETIMES AND THEN NORTHNORTHEAST WARDS AND WEAKEN TO A VERY SVERE CYCLONIC STORM DURING NEXT 3 HOURS DUE TO INTERACTION OF THE SYSTEM WITH LAND TERAAIN.

(RK J ENAMANI)  
SCIENTIST-F  
RSMC, NEW DELHI

---

**PROBABILITY OF CYCLOGENESIS (FORMATION OF DEPRESSION)**

**NIL: 0%, LOW: 1-25%, FAIR: 26-50%, MODERATE: 51-75% AND HIGH: 76-100%**



**PROBABILITY OF CYCLOGENESIS (FORMATION OF DEPRESSION)**  
**NIL: 0%, LOW: 1-25%, FAIR: 26-50%, MODERATE: 51-75% AND HIGH: 76-100%**





# OBSERVED AND FORECAST TRACK ALONGWITH CONE OF UNCERTAINTY OF EXTREMELY SEVERE CYCLONIC STORM "TAUKTAE" OVER NORTHEAST ARABIAN SEA BASED ON 1500 UTC OF 17<sup>TH</sup> MAY, 2021



**DATE/TIME IN UTC**  
 IST=UTC + 0530  
**L: LOW PRESSURE AREA**  
**WML: WELL MARKED LOW PRESSURE AREA**  
**D: DEPRESSION (17-27 KT)**  
**DD: DEEP DEPRESSION (28-33 KT)**  
**CS: CYCLONIC STORM (34-47 KT)**  
**SCS: SEVERE CYCLONIC STORM (48-63KT)**  
**VSCS: VERY SEVERE CYCLONIC STORM (64-89 KT)**  
**ESCS: EXTREMELY SEVERE CYCLONIC STORM (90-119 KT)**  
**SuCS: SUPER CYCLONIC STORM ( $\geq$  120 KT)**

- LESS THAN 34 KT
- 34-47 KT
- $\geq$  48 KT
- OBSERVED TRACK
- FORECAST TRACK
- CONE OF UNCERTAINTY

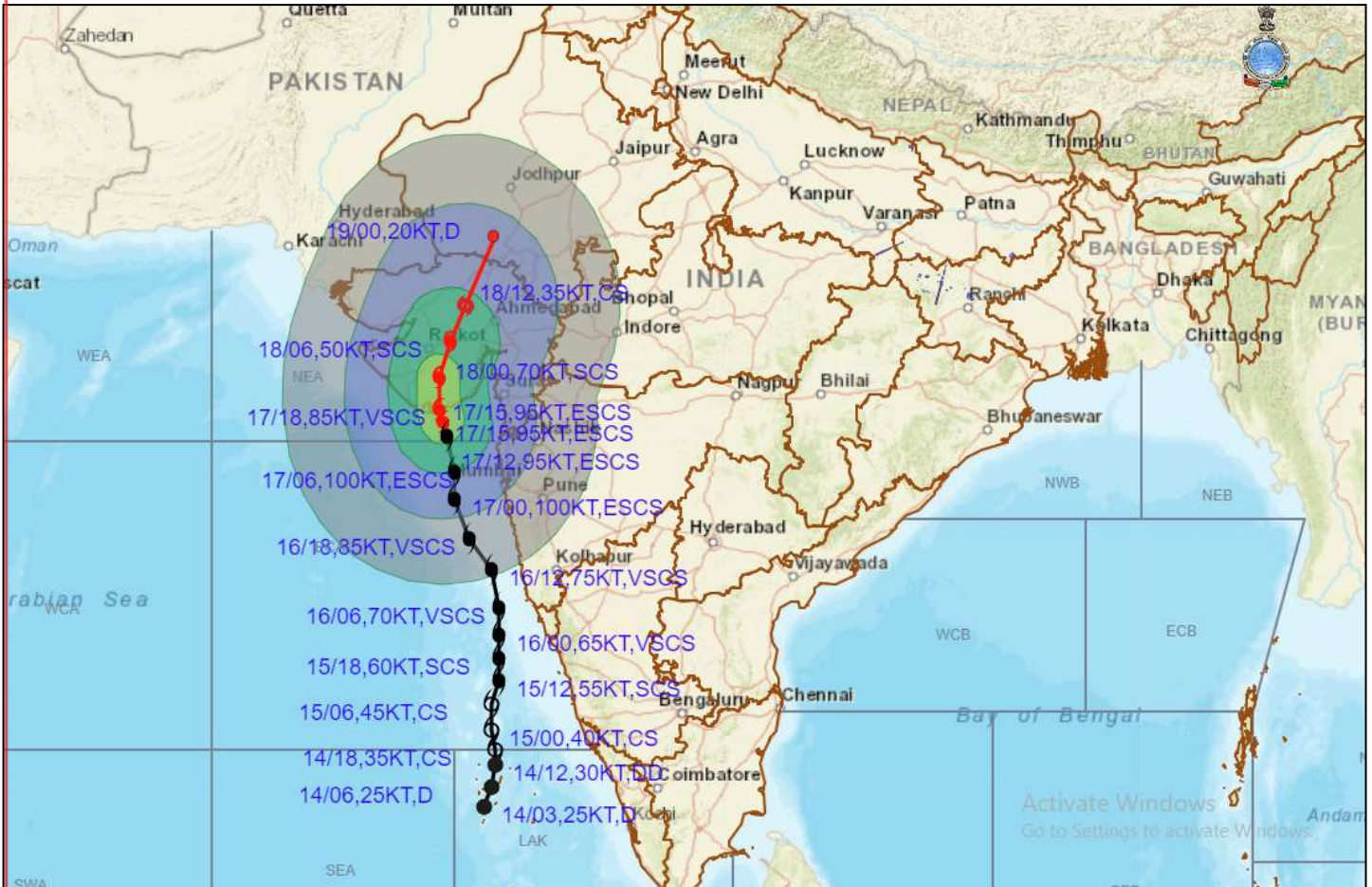
### PROBABILITY OF CYCLOGENESIS (FORMATION OF DEPRESSION)

NIL: 0%, LOW: 1-25%, FAIR: 26-50%, MODERATE: 51-75% AND HIGH: 76-100%





# OBSERVED AND FORECAST TRACK ALONGWITH CONE OF UNCERTAINTY OF EXTREMELY SEVERE CYCLONIC STORM "TAUKTAE" OVER NORTHEAST ARABIAN SEA BASED ON 1500 UTC OF 17<sup>TH</sup> MAY, 2021



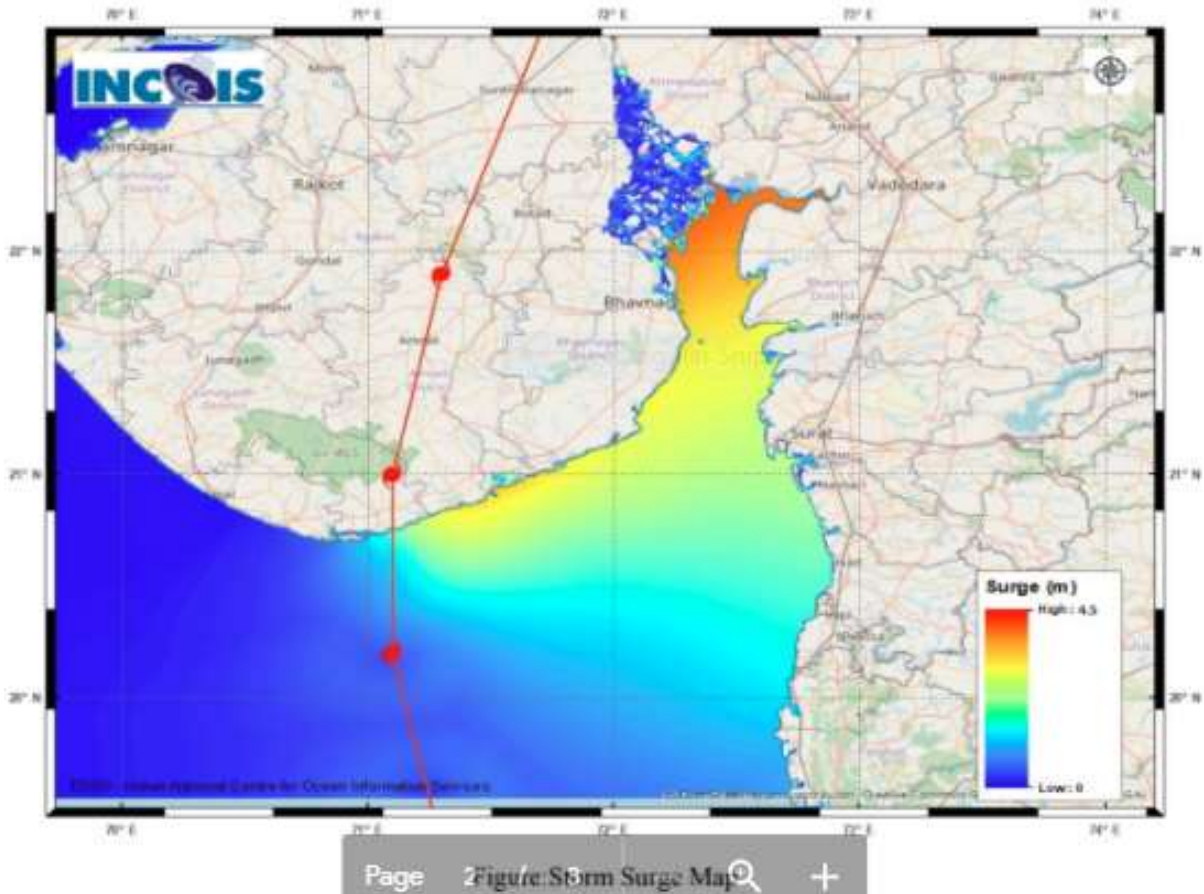
DATE/TIME IN UTC  
 IST=UTC + 0530  
 L: LOW PRESSURE AREA  
 WML: WELL MARKED LOW PRESSURE AREA  
 D: DEPRESSION (17-27 KT)  
 DD: DEEP DEPRESSION (28-33 KT)  
 CS: CYCLONIC STORM (34-47 KT)  
 SCS: SEVERE CYCLONIC STORM (48-63KT)  
 VSCS: VERY SEVERE CYCLONIC STORM (64-89 KT)  
 ESCS: EXTREMELY SEVERE CYCLONIC STORM (90-119 KT)  
 SuCS: SUPER CYCLONIC STORM ( $\geq$  120 KT)

- LESS THAN 34 KT
- 34-47 KT
- $\geq$  48 KT
- OBSERVED TRACK
- FORECAST TRACK
- ▲ CONE OF UNCERTAINTY

AREA OF MAXIMUM SUSTAINED WIND SPEED:

- 28-33 KT (52-61 KMPH)
- 34-49 KT (62-91 KMPH)
- 50-63 KT (92-117 KMPH)
- $\geq$  64 KT ( $\geq$ 118 KMPH)

IMPACT OVER THE SEA		
MSW (knot/kmph)	Impact	Action
28-33 (52-61)	Very rough seas	Total suspension of fishing operations
34-49 (62-91)	High to very high seas	Total suspension of fishing operations
50-63 (92-117)	Very high seas	Total suspension of fishing operations
$\geq$ 64 ( $\geq$ 118)	Phenomenal	Total suspension of fishing operations



---

**PROBABILITY OF CYCLOGENESIS (FORMATION OF DEPRESSION)**  
**NIL: 0%, LOW: 1-25%, FAIR: 26-50%, MODERATE: 51-75% AND HIGH: 76-100%**